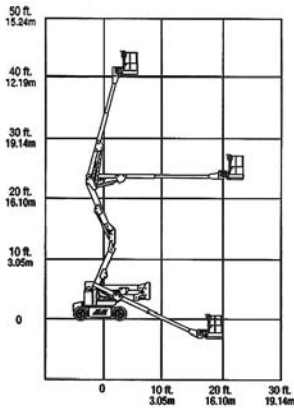


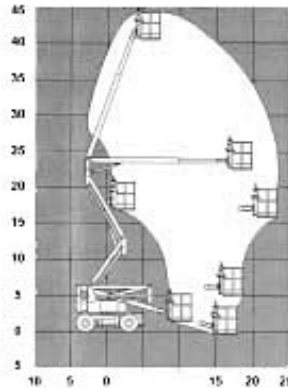
# Articulated Booms



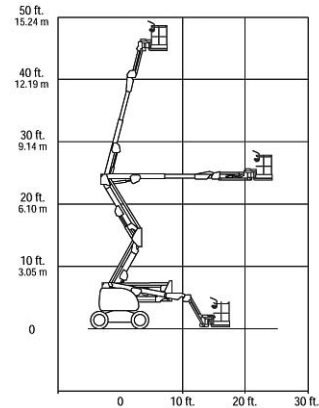
Select from a variety of unique articulating and telescoping booms, designed to reach hard to access areas.



Cat/Class .....600-5850  
 Make .....**JLG**  
 Model .....**E400AJP**  
                   **Narrow**  
 Lift Height (max) .. .40'  
 Capacity .....500 lbs  
 Basket Size .....48"x30"  
 Power .....Battery  
*Stowed Dimensions*  
 Width .....4'11"  
 Length .....18'1"  
 Height .....6'5.75"  
 Weight (gross) .....13,100 lbs  
 Horiz Reach .....21'2"  
 Up & Over Height. .21'5"  
 Steer x Drive .....2x2

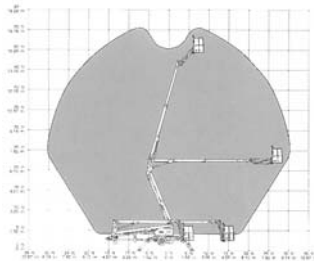


Cat/Class .....600-5840  
 Make .....**SNORKEL**  
 Model .....**UNO 41G**  
 Lift Height (max) .. .40'10"  
 Capacity .....500 lbs  
 Basket Size .....48"x30"  
 Power .....Gas/LP  
*Stowed Dimensions*  
 Width .....5'10"  
 Length .....16'3"  
 Height .....7'4"  
 Weight (gross) .....11,200 lbs  
 Generator .....2,000 W  
 Horiz Reach .....23'7.5"  
 Up & Over Height. .16'2"  
 Steer x Drive .....2x2

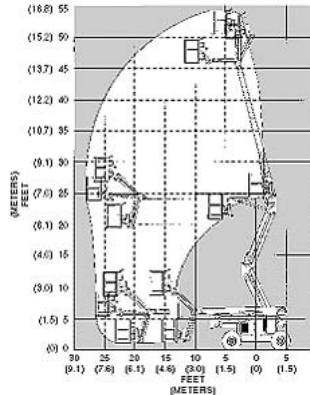


Cat/Class .....600-5856  
 Make .....**JLG**  
 Model .....**450 AJ**  
 Lift Height (max) .. .45'  
 Capacity .....500 lbs  
 Basket Size .....72"x30"  
 Power .....Diesel  
*Stowed Dimensions*  
 Width .....6'6"  
 Length .....21'5"  
 Height .....7'4"  
 Weight (gross) .....15,520 lbs  
 Horiz Reach .....24'6"  
 Up & Over Height. .25'2"  
 Steer x Drive .....2x2 or 2x4

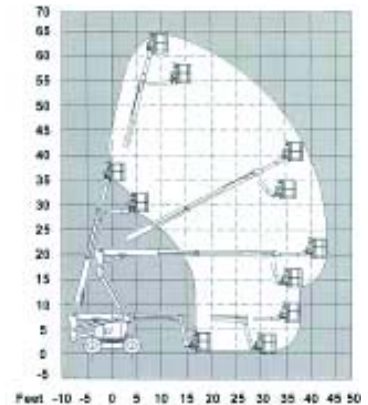
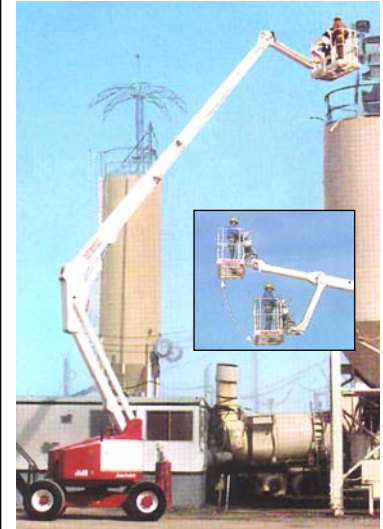
# Articulated Booms



Cat/Class .....600-5853  
 Make .....**GENIE**  
 Model .....**TMZ-50/30**  
 Lift Height (max) ... .56'  
 Capacity ..... .500 lbs  
 Platform Size ..... .48"x30"  
 Power ..... .Battery  
*Stowed Dimensions*  
 Width ..... .65"  
 Length ..... .22'  
 Height ..... .78"  
 Weight (gross) ..... .4,600 lbs  
 Horiz Reach ..... .30' (from pivot)  
 Horiz Reach ..... .23'  
 (from edge of outrigger foot pads)  
 Jib ..... .4'6"



Cat/Class .....600-5862  
 Make .....**SNORKEL**  
 Model .....**ATB 50**  
 Lift Height (max) ... .50'  
 Capacity ..... .500 lbs  
 Basket Size ..... .96"x30"  
 Power ..... .Diesel  
*Stowed Dimensions*  
 Width ..... .7'6"  
 Length ..... .21'  
 Height ..... .6'11"  
 Weight (gross) ..... .14,980 lbs  
 Generator ..... .2,000 W  
 Horiz Reach ..... .28'  
 Up & Over Height. . .24'  
 Steer x Drive ..... .2x4



Cat/Class .....600-5870  
 Make .....**SNORKEL**  
 Model .....**ATB 60**  
 Lift Height (max) ... .60'  
 Capacity ..... .500 lbs  
 Basket Size ..... .96"x30"  
 Power ..... .Gas  
*Stowed Dimensions*  
 Width ..... .7'11.5"  
 Length ..... .29'1.5"  
 Height ..... .8'3"  
 Weight (gross) ..... .27,600 lbs  
 Generator ..... .2,000 W  
 Horiz Reach ..... .43'1"  
 Up & Over Height. . .19'3"  
 Steer x Drive ..... .2x2